

7502 CALIPER BRAKE

Single Brake Design

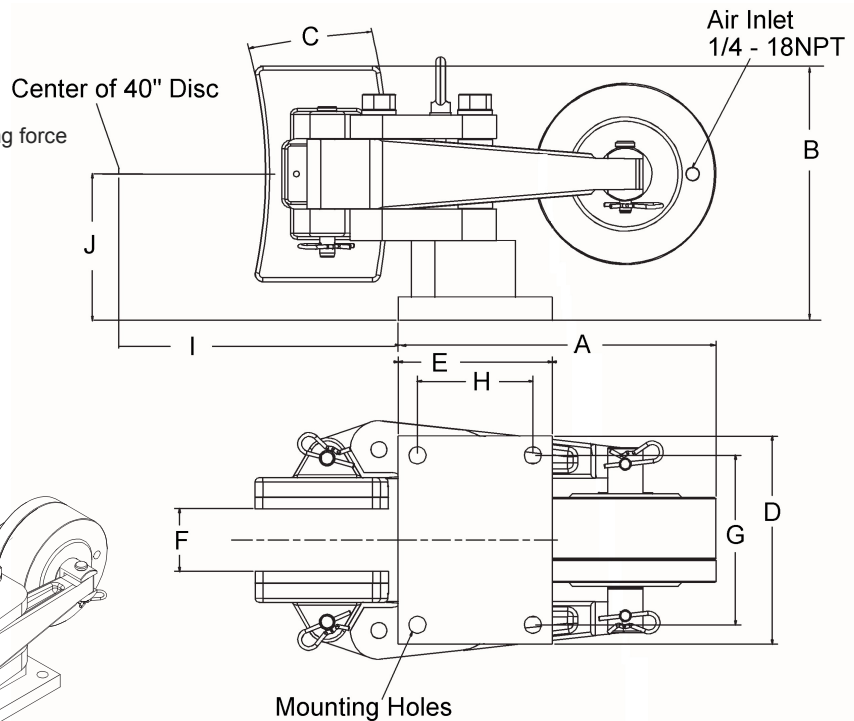
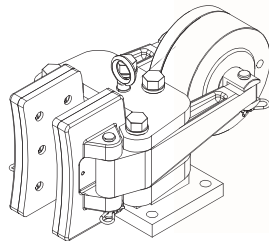
- Provides industry-leading torque capacity
- Less brake chatter – more evenly applied braking force
- Pneumatic applied / Spring Release

Lever Arm with Piston Design

- Multiplies force from the piston to the rotor
- Replaces low torque bladder system
- NO BLADDER BLOWOUT

Seal System Design

- Piston and cylinder seal
- Maximum pressure 120PSI



Model	7502
A	10.31"
B	8.25"
C	4.65"
D	6.75"
E	5.00"
F	2.04"
G	5.500"
H	3.750"
I	20.13"
J	4.75"

AIR APPLIED / SPRING RELEASE 7502
Weight: 80 Lbs
Mounting: Pedestal Mount
Description: Air Applied / Spring Release
Actuation Method: Air
Maximum Pressure: 120 PSI
Piston: Air Applied / Spring Release

Corresponding Rotors: 6560 (40" Diameter)	
Friction Lining Area: 56 IN ²	Wearable Lining Volume: 14 Cu Inches
Design: Open	Medium Volume: 22.5 IN ³
Housing Construction: Steel	Static Braking Tangential Force: New Lining 4600 lbs Worn Lining 3600 lbs
Piston/Cylinder Construction: Stainless Steel	Clamp Force: 10,300 Lbs.
Port Size: 1/4" NPT (2 places)	Static Torque using 40" Rotor Full Lining: 81,650 in/Lbs.
Friction Lining: High Temperature Non-Asbestos	Surface Finish: Powder Coat Paint