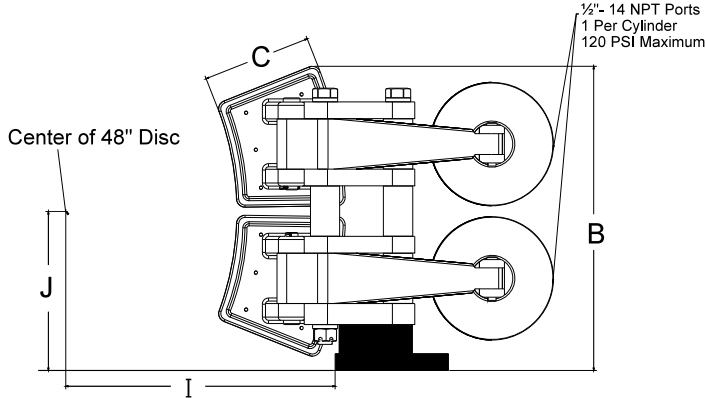
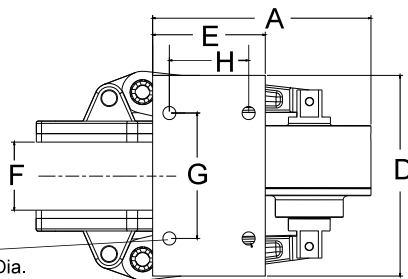


8005 CALIPER BRAKE



1/2"- 14 NPT Ports
1 Per Cylinder
120 PSI Maximum

Mounting Holes 25/32" Dia.
Thru 4 Plcs. As shown



MODEL	8005
A	13.08"
B	18.19"
C	6.50"
D	12"
E	6.75"
F	4.06"
G	7.500"
H	4.750"
I	23.15"
J	9.50"

DOUBLE CALIPER BRAKE PEDESTAL MOUNT

Corresponding Rotors: 48SVD (48" Diameter)

Friction Lining Area: 192 Sq Inches	Wearable Lining Volume: 38 Cu Inches
Design: Open	Medium Volume: 32 Cu Inches
Housing Construction: Steel	Braking Tangential Force: 16,000 lbs @ 80 PSI
Piston / Cylinder Construction: Stainless Steel	Torque In/Lbs: $T = \frac{\text{Rotor Dia.}}{2} \times 3.5 \times 16,000 \text{ LBS}$
Port Size: 1/2" NPT (2 Places)	Static Torque using 48SVD Rotor @ Full Lining: 328,000 in/lbs.
Friction Lining: .45 Coefficient of Friction	Surface Finish: Enamel Paint

8005 SPRING APPLIED / AIR RELEASE

Weight: 295 Lbs

Mounting: Pedestal Mount

Description: Double Air Applied Caliper Brake	Description: Double Spring Applied Air Release Caliper Brake
Actuation Method: Pneumatic	Actuation Method: Spring Force
Maximum Pressure: 120 PSI	Maximum Pressure: 120 PSI Minimum Release Pressure: 75 PSI
Piston: Single Acting Hydraulic Applied / Spring Return	Piston: Single Acting Spring Applied / Air Release